

Table of Contents

.....	3
<i>Latest Updates</i>	3
<i>Popular</i>	3
<i>Product Information</i>	3

Latest Updates



DPI Version 13.2 BETA7 Hot 04.10.2024

Profile for Service 19, new parameters and commands, protocols, fixes and improvements



GUI Version 2.35.4 26.09.2024

Connecting to equipment via SSH, redesigning the Hotspot section and its new features



DPI Version 13.1 Congo 24.06.2024

Subscriber activity control, new service: DNS response spoofing



DPI Version 12.4 Machu Picchu 11.12.2023

New services: Session policing, IPv6 traffic blocking, VLAN traffic mirroring

Popular



DPDK Interface Configuration DPI Platform Configuration: DPDK Interface Setup, Packet Processing Parameters, and Memory and Processor Management. Commands for Managing and Verifying DPI Configuration, Supported Protocols, and Network Optimization Methods



Hardware Requirements and Performance Hardware Requirements: Functional Capabilities, Architectural Requirements, and Performance Standards Necessary for Effective Traffic Analysis. Virtual Machine Requirements

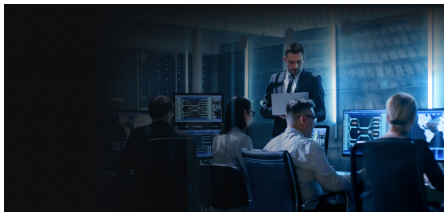


DPI Use Cases Examples of uplink channel optimization, setting up tariff plans and Captive Portal, identifying Wi-Fi users via mobile devices, and managing categorized lists



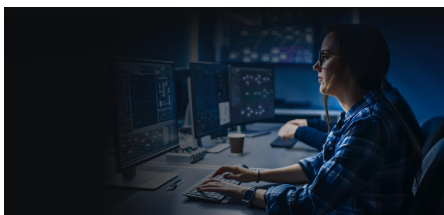
VEOS Installation and Configuration VEOS operating system installation process. Preparation of the installation media and step-by-step instructions for installation and basic system setup

Product Information



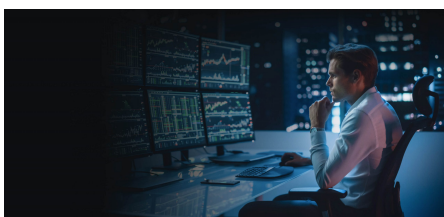
DPI

Multi-functional platform for traffic management [Go to section](#)



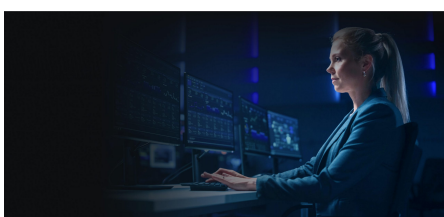
BRAS

Flexible and scalable software solution [Go to section](#)



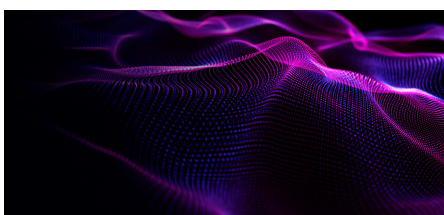
CG-NAT

Transparent network address translation on standard x86 servers [Go to section](#)



QoE

Collecting statistics, assessing network health and service quality [Go to section](#)



VEOS

Operating system [Go to section](#)



New EPDG

Solution for launching Wi-Fi
Calling (VoWiFi) [Go to section](#)