

# Содержание

.....	3
<b><i>Latest Updates</i></b> .....	3
<b><i>Popular</i></b> .....	3
<b><i>Product Information</i></b> .....	3



## Latest Updates



### **DPI Version 13.2 BETA7 Hot** 04.10.2024

Profile for Service 19, new parameters and commands, protocols, fixes and improvements



### **GUI Version 2.35.4** 26.09.2024

Connecting to equipment via SSH, redesigning the Hotspot section and its new features



### **DPI Version 13.1 Congo** 24.06.2024

Subscriber activity control, new service: DNS response spoofing



### **DPI Version 12.4 Machu Picchu** 11.12.2023

New services: Session policing, IPv6 traffic blocking, VLAN traffic mirroring

## Popular



**DPDK Interface Configuration** DPI Platform Configuration: DPDK Interface Setup, Packet Processing Parameters, and Memory and Processor Management. Commands for Managing and Verifying DPI Configuration, Supported Protocols, and Network Optimization Methods.



**Hardware Requirements and Performance** Hardware Requirements: Functional Capabilities, Architectural Requirements, and Performance Standards Necessary for Effective Traffic Analysis. Virtual Machine Requirements.

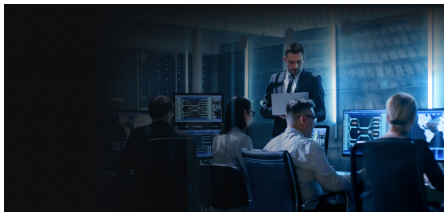


**DPI Use Cases** Examples of uplink channel optimization, setting up tariff plans and Captive Portal, identifying Wi-Fi users via mobile devices, and managing categorized lists.

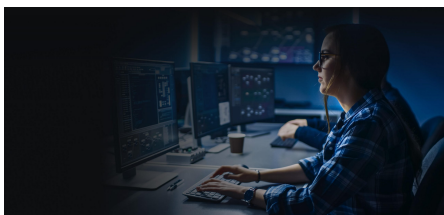


**VEOS Installation and Configuration** VEOS operating system installation process. Preparation of the installation media and step-by-step instructions for installation and basic system setup.

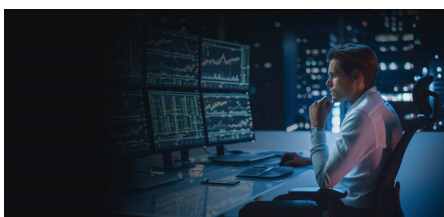
## Product Information



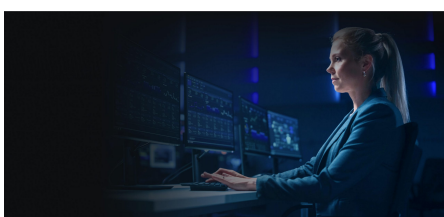
DPI  
Multi-functional platform for  
traffic management [Go to  
section](#)



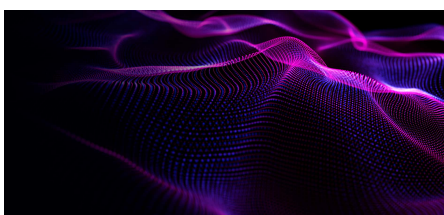
BRAS  
Flexible and scalable software  
solution [Go to section](#)



CG-NAT  
Transparent network address  
translation on standard x86  
servers [Go to section](#)



QoE  
Collecting statistics, assessing  
network health and service  
quality [Go to section](#)



VEOS  
Operating system [Go to section](#)



New EPDG

Solution for launching Wi-Fi  
Calling (VoWiFi) [Go to section](#)