

Содержание

.....	3
<i>Latest Updates</i>	3
<i>Popular</i>	3
<i>Product Information</i>	3

Latest Updates



DPI Version 13.2 BETA7 Hot 04.10.2024

Profile for Service 19, new parameters and commands, protocols, fixes and improvements



DPI Version 13.1 Congo 24.06.2024

Subscriber activity control, new service: DNS response spoofing



GUI Version 2.34.5 18.06.2024

QoE report settings, data auto-deletion settings on the default disk, etc.



DPI Version 12.4 Machu Picchu 11.12.2023

New services: Session policing, IPv6 traffic blocking, VLAN traffic mirroring

Popular



DPDK Interface Configuration DPI Platform Configuration: DPDK Interface Setup, Packet Processing Parameters, and Memory and Processor Management. Commands for Managing and Verifying DPI Configuration, Supported Protocols, and Network Optimization Methods.



Hardware Requirements and Performance Hardware Requirements: Functional Capabilities, Architectural Requirements, and Performance Standards Necessary for Effective Traffic Analysis. Virtual Machine Requirements.

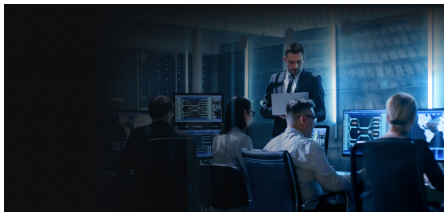


DPI Use Cases Examples of uplink channel optimization, setting up tariff plans and Captive Portal, identifying Wi-Fi users via mobile devices, and managing categorized lists.

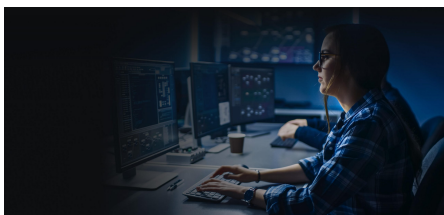


VEOS Installation and Configuration VEOS operating system installation process. Preparation of the installation media and step-by-step instructions for installation and basic system setup.

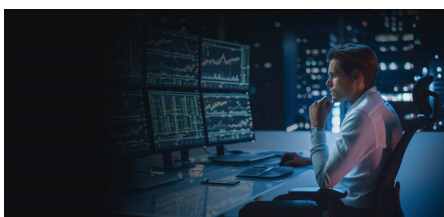
Product Information



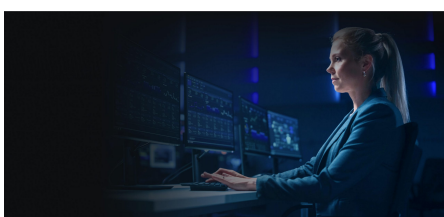
DPI
Multi-functional platform for
traffic management [Go to
section](#)



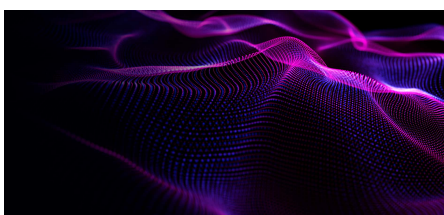
BRAS
Flexible and scalable software
solution [Go to section](#)



CG-NAT
Transparent network address
translation on standard x86
servers [Go to section](#)



QoE
Collecting statistics, assessing
network health and service
quality [Go to section](#)



VEOS
Operating system [Go to section](#)



New EPDG

Solution for launching Wi-Fi
Calling (VoWiFi) [Go to section](#)