

Содержание

.....	3
<i>Latest Updates</i>	3
<i>Popular</i>	3
<i>Product Information</i>	3

Latest Updates



DPI Version 13.2 BETA5 Hot 22.08.2024

Profile for Service 19 (DNS spoofing), new parameters and commands, fixes and improvements



DPI Version 13.1 Congo 24.06.2024

Subscriber activity control, new service: DNS response spoofing



GUI Version 2.34.5 18.06.2024

QoE report settings, data auto-deletion settings on the default disk, etc.



DPI Version 12.4 Machu Picchu 11.12.2023

New services: Session policing, IPv6 traffic blocking, VLAN traffic mirroring

Popular



DPDK Interface Configuration System preparation process, network port configuration, and device alias creation.



Hardware Requirements and Performance Minimum and recommended hardware requirements, virtual machine requirements.



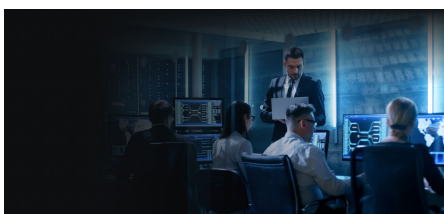
DPI Use Cases Examples of uplink channel optimization, setting up tariff plans and Captive Portal, identifying Wi-Fi users via mobile devices, and managing categorized lists.



VEOS Installation and Configuration VEOS operating system installation process.

Preparation of the installation media and step-by-step instructions for installation and basic system setup.

Product Information



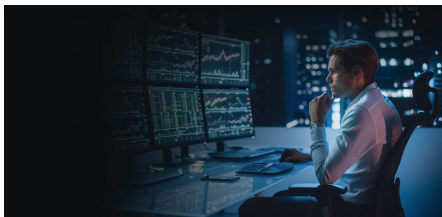
DPI

Multi-functional platform for traffic management [Go to section](#)



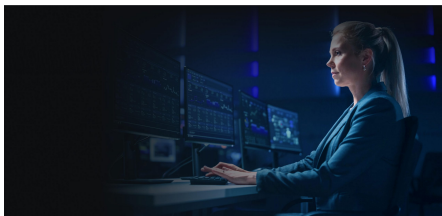
BRAS

Flexible and scalable software solution [Go to section](#)



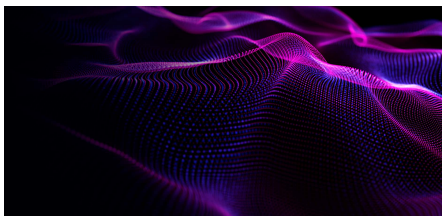
CG-NAT

Transparent network address translation on standard x86 servers [Go to section](#)



QoE

Collecting statistics, assessing network health and service quality [Go to section](#)



VEOS

Operating system [Go to section](#)



New EPDG

Solution for launching Wi-Fi
Calling (VoWiFi) [Go to section](#)