

# Содержание

- Searching Subscriber Statistics by IP Address ..... 3
  - Configuring Data Retention Period* ..... 5
  - Searching for Subscriber Activity in the SSG GUI* ..... 7
    - For a Private IP Address. NAT Flow Section. QoE License Required ..... 7
    - For a Public IP Address from Aggregated Data. NetFlow Section ..... 8
    - For a Public IP Address. Raw Full NetFlow Section ..... 8



# Searching Subscriber Statistics by IP Address

To enable this functionality, the following **components** are required:

1. [QoE Stor Module](#)
2. [SSG DPI Management Interface](#)



The following **licenses** are required:

1. SSG: [CG-NAT — Network Address Translation and IPFIX Format Statistics Export](#)
2. QoE: [NAT Flow Statistics Collection, Compression, and Custom Filters](#).

The data set to be stored depends on the type of subscriber:

- For a public IP address, exporting Full NetFlow to QoE Stor is sufficient. [Configuring export in IPFIX \(Netflow 10\)](#)
- For a private IP address, additional NAT Flow data collection — translation information — is required. [NAT Flow Configuration](#)

Information is searched through aggregated data. Initially, SSG exports raw data to QoE Stor, and by default, aggregation is performed every 15 minutes. [More on changing aggregation and re-aggregation intervals](#).

Raw unaggregated data is available in the following sections of QoE Analytics in the GUI:

1. *Raw Full NetFlow* (by default, data is stored for **2 hours**)
2. *Raw NAT Flow* (by default, data is stored for **2 hours**, QoE license required)

VAS Experts

Search

SSG control

PCRF control

QoE analytics

QoE dashboard

Netflow

Raw full netflow

Clickstream

Raw clickstream

GTP flow

Raw GTP flow

NAT flow

Raw NAT flow

DNS flow

QoE a

Period

Top s


Subscr

Filter

46.243	188.22	188.22	188.22	188.22	188.22	46.243	46.243	78.140	78.140	45.151.1	78.140	45,022
--------	--------	--------	--------	--------	--------	--------	--------	--------	--------	----------	--------	--------

Aggregated statistics are available in the following sections of QoE Analytics in the GUI:

1. *NetFlow* (by default, data is stored for **14 days**)
2. *NAT Flow* (by default, data is stored for **14 days**, QoE license required)


**VAS Experts**

SSG control

PCRF control

QoE analytics

QoE dashboard

Netflow

Raw full netflow

Clickstream

Raw clickstream

GTP flow

Raw GTP flow

NAT flow

Raw NAT flow

DNS flow

QoE a

Period

Top s

Subscr

Q Filt

46.243

188.22'

188.22'

188.22'

188.22'

46.243

46.243

78.140.

78.140.

45.151.1

78.140.

45,022

## Configuring Data Retention Period

In the GUI, go to Administrator → GUI Configuration → Settings → QoE Stor: DB lifetime settings:

- For Raw Full NetFlow, select *QoE Stor fullflow main log lifetime in hours* **(1)**.
- For NAT Flow, select *QoE Stor NAT aggregated log lifetime in days* **(2)**.

Administrator > GUI configuration

Save The form Editor

**Settings**

Common

Jobs intervals and periods

QoE Stor: DB (Clickhouse) connection

QoE Stor: Raw log aggregation settings

**QoE Stor: DB lifetime settings**

QoE Stor: Discs settings

SMTP settings

System

DB (MySQL) connection

Ulr settings: System settings

Ulr settings: Web rules lists

Push notifications settings

SSO authorization settings

Maps settings

VasCloud settings

Cluster settings

Backup settings

Backup auto restoration settings

**QoE Stor: DB lifetime settings**

QoE Stor cache lifetime in seconds (QOESTOR\_CACHE\_LIFE\_TIME\_SEC) 3600

QoE Stor main log lifetime in hours (QOESTOR\_MAIN\_LOG\_PARTITIONS\_LIFE\_TIME\_HOUR) 2

QoE Stor aggregated log lifetime in days (QOESTOR\_AGG\_LOG\_PARTITIONS\_LIFE\_TIME\_DAYS) 14

1 QoE Stor fullflow main log lifetime in hours (QOESTOR\_FULLFLOW\_MAIN\_LOG\_PARTITIONS\_LIFE\_TIME\_HOUR) 2

QoE Stor fullflow aggregated log lifetime in days (QOESTOR\_FULLFLOW\_AGG\_LOG\_PARTITIONS\_LIFE\_TIME\_DAYS) 14

QoE Stor clickstream main log lifetime in hours (QOESTOR\_CLICKSTREAM\_MAIN\_LOG\_PARTITIONS\_LIFE\_TIME\_HOUR) 2

QoE Stor clickstream aggregated log lifetime in days (QOESTOR\_CLICKSTREAM\_AGG\_LOG\_PARTITIONS\_LIFE\_TIME\_DAYS) 14

QoE Stor NAT main log lifetime in hours (QOESTOR\_NAT\_MAIN\_LOG\_PARTITIONS\_LIFE\_TIME\_HOUR) 2

2 QoE Stor NAT aggregated log lifetime in days (QOESTOR\_NAT\_AGG\_LOG\_PARTITIONS\_LIFE\_TIME\_DAYS) 14

QoE Stor GTP main log lifetime in hours (QOESTOR\_GTP\_MAIN\_LOG\_PARTITIONS\_LIFE\_TIME\_HOUR) 2

When increasing the data retention period, it's recommended to enable the deletion of old data when the disk fills up: Administrator → GUI Configuration → Settings → QoE Stor: Discs settings → Select *Enable force moving data for DEFAULT disk* – choose *Enable data removing!* → Select *Move factor for DEFAULT disk* – set the value to 0.1.

Administrator > GUI configuration

Save The form Editor

**Settings**

Common

Jobs intervals and periods

QoE Stor: DB (Clickhouse) connection

QoE Stor: Raw log aggregation settings

QoE Stor: DB lifetime settings

**QoE Stor: Discs settings**

SMTP settings

System

DB (MySQL) connection

Ulr settings: System settings

Ulr settings: Web rules lists

Push notifications settings

SSO authorization settings

Maps settings

VasCloud settings

Cluster settings

Backup settings

Backup auto restoration settings

**QoE Stor: Discs settings**

Logs list to move to COLD disk (QOESTOR\_LOGS\_TO\_MOVE\_TO\_COLD\_DISK) ↓

QoE Stor logs lifetime before moving to COLD disk, in hours (QOESTOR\_LOGS\_LIFETIME\_BEFORE\_MOVING\_TO\_COLD\_DISK) 720

Days of week to COLD disk (QOESTOR\_MOVE\_OLD\_PARTITIONS\_TO\_COLD\_DISK\_SCHEDULE\_WEEK\_DAYS) ↓

Hours of day to COLD disk (QOESTOR\_MOVE\_OLD\_PARTITIONS\_TO\_COLD\_DISK\_SCHEDULE\_HOURS) ↓

Enable force moving data for DEFAULT disk (QOESTOR\_FORCE\_MOVE\_FROM\_DEFAULT\_DISK) Enable data removing! ↓

Move factor for DEFAULT disk (QOESTOR\_FORCE\_MOVE\_FROM\_DEFAULT\_DISK\_FACTOR) 0.1

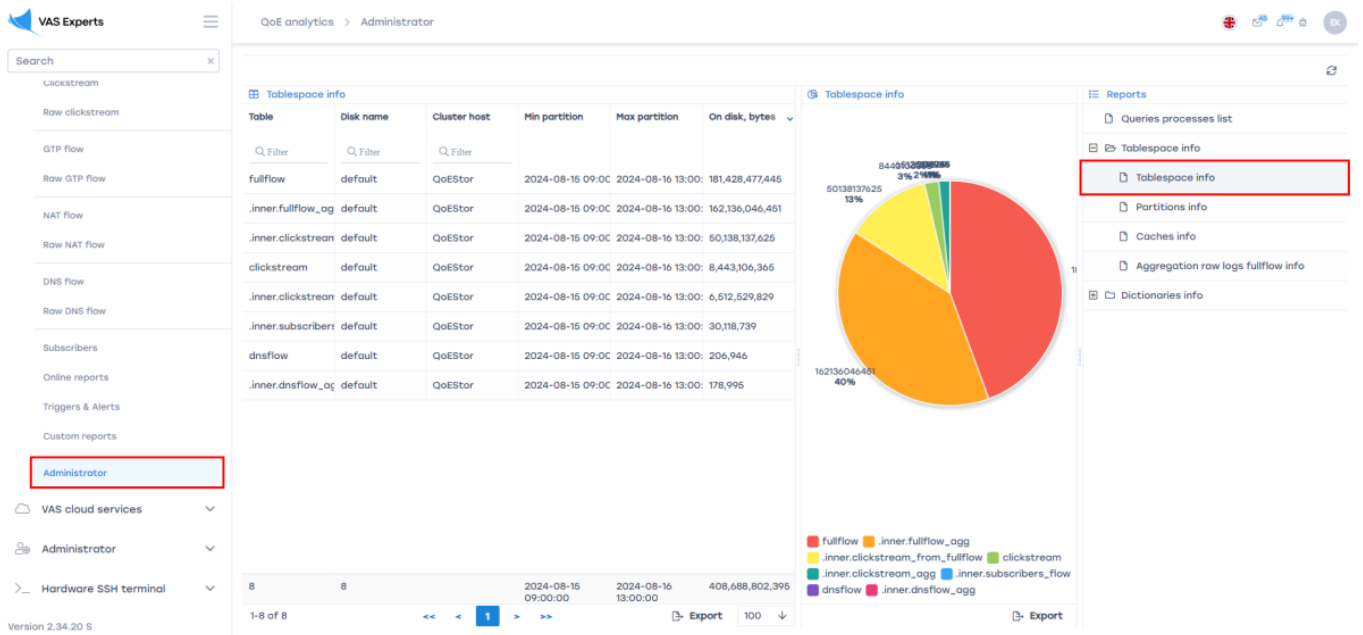
Enable force moving data for HOT disk (QOESTOR\_FORCE\_MOVE\_FROM\_HOT\_DISK) ↓

Move factor for HOT disk (QOESTOR\_FORCE\_MOVE\_FROM\_HOT\_DISK\_FACTOR) 0.1

Enable force moving data for COLD disk (QOESTOR\_FORCE\_MOVE\_FROM\_COLD\_DISK) ↓

Move factor for COLD disk (QOESTOR\_FORCE\_MOVE\_FROM\_COLD\_DISK\_FACTOR) 0.1

You can find out how much disk space logs are using in QoE Analytics → Administrator → Reports → Tablespace info.



## Searching for Subscriber Activity in the SSG GUI

### For a Private IP Address. NAT Flow Section. QoE License Required



You can request a license from the GUI by filling out a form in the respective section or contact [sd@vas.expert](mailto:sd@vas.expert)

The ability to view subscriber activity data appears after generating the NAT log — instructions [NAT Flow Configuration](#).

In the GUI, navigate to QoE Analytics → NAT Flow.

In the NAT Flow section, you need to:

1. Select the time period
2. Enable the “Source IPv4-address” and “Destination IPv4-Address” filters (check the box)
3. Enter values for the enabled filters and apply changes

Subscription status: REMAIN 165 DAYS

Period: NAT

Filters:

Filter	Operator	Value
<input type="checkbox"/> Off	Source IPv4-addr	like 45.199.184.192
<input type="checkbox"/> Off	Source port	like
<input type="checkbox"/> Off	Destination IPv4	like 91.190.98.8
<input type="checkbox"/> Off	Destination port	like
<input type="checkbox"/> Off	Post nat source	like
<input type="checkbox"/> Off	Post nat source	like
<input type="checkbox"/> Off	Login	like
<input type="checkbox"/> Off	Protocol	like
<input type="checkbox"/> Off	Event type	like

Help Cancel Apply

## For a Public IP Address from Aggregated Data. NetFlow Section

In the GUI, navigate to QoE Analytics → NetFlow.

In the NetFlow section, you need to:

1. Select the time period (**by default stored for only 14 days!**)
2. Enable the “Subscriber,” “Login,” and “Host IP” filters (check the box)
3. Enter values for the enabled filters and apply changes

Period: 09/05/2024 17:00 - 09/05/2024 18:59

For all DPI devices

10 minutes

Filters:

Filter	Operator	Value
<input type="checkbox"/> Off	Host	like
<input checked="" type="checkbox"/> On	Subscriber	like 185.104.5.225
<input checked="" type="checkbox"/> On	Login	like sub45278
<input checked="" type="checkbox"/> On	Host IP	like 45.14.48.242
<input type="checkbox"/> Off	Protocol	like
<input type="checkbox"/> Off	App protocols	in
<input type="checkbox"/> Off	Application pri	like
<input type="checkbox"/> Off	Subscribers AS	like
<input type="checkbox"/> Off	Hosts AS num	like
<input type="checkbox"/> Off	Host category	in
<input type="checkbox"/> Off	Infected traffi	in

Help Cancel Apply

## For a Public IP Address. Raw Full NetFlow Section

In the GUI, navigate to QoE Analytics → Raw Full NetFlow.



In the Raw Full NetFlow section, you need to:

1. Select the time period (**by default stored for only 2 hours!**)
2. Enable the “IPv4 source address” and “IPv4 destination address” filters (check the box)
3. Enter values for the enabled filters and apply changes

The screenshot displays the VAS Experts interface for configuring 'Raw full netflow'. The 'Period' is set to '08/16/2024 11:22 - 08/16/2024 11:37'. The 'Filters' dialog is open, showing a list of filters with checkboxes to enable or disable them. The 'Source IPv4-address' and 'Destination IPv4-address' filters are enabled (checked). The 'Source IPv4-address' filter has the value '45.199.184.192' and the 'Destination IPv4-address' filter has the value '91.190.98.8'. The 'Apply' button is highlighted.

Filter	Operator	Value
<input checked="" type="checkbox"/> On	Source IPv4-address	like 45.199.184.192
<input type="checkbox"/> Off	Source IPv6-address	like
<input type="checkbox"/> Off	Source port	like
<input type="checkbox"/> Off	Source AS number	like
<input checked="" type="checkbox"/> On	Destination IPv4-address	like 91.190.98.8
<input type="checkbox"/> Off	Destination IPv6-address	like
<input type="checkbox"/> Off	Destination port	like
<input type="checkbox"/> Off	Destination AS number	like
<input type="checkbox"/> Off	Net protocol	like
<input type="checkbox"/> Off	Application protocol	like