

Table of Contents

Subscribers and services 3

Subscribers and services

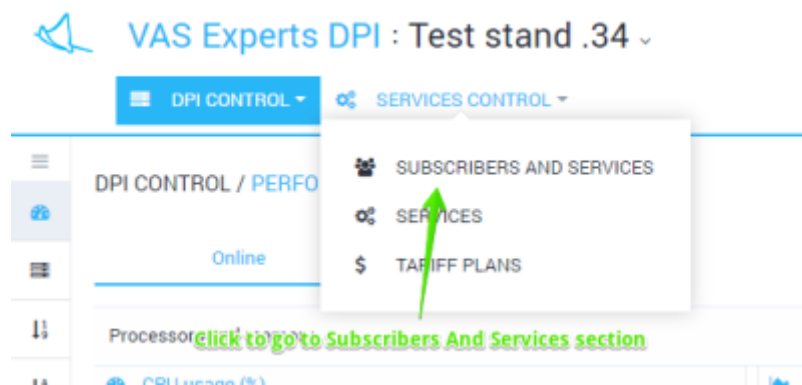
This section SERVICES CONTROL / SUBSCRIBERS AND SERVICES allows you to manage the list of all subscribers processed by DPI device and bind services to them (so far without profiles - this feature is currently under development).

Lists synchronization is performed every 30 minutes on a schedule.

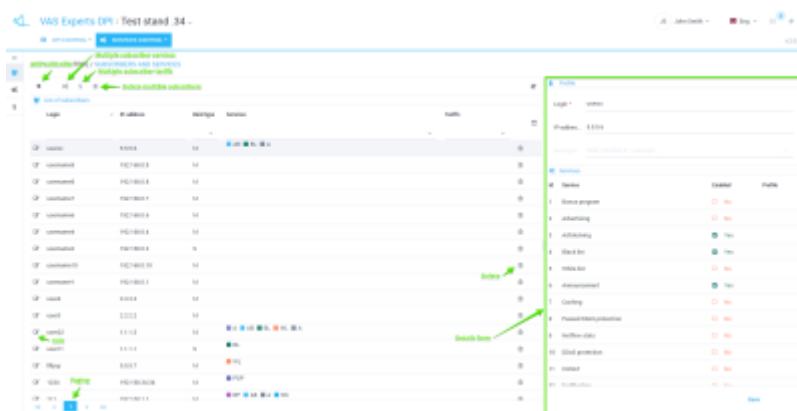
It is possible to add subscribers with the following connection types:

- **Single:** one login (subscriber) is assigned only one ip address
- **Multi:** one login (subscriber) can be assigned several ip addresses, also it can be assigned a range of ip addresses and CIDR
- **Without bind:** the subscriber does not have a login, and the services are assigned using the ip address

To go to the section, open the SERVICES CONTROL menu and click on "SUBSCRIBERS AND SERVICES".



The section will be opened as on the figure below.



The section has the following features:

- View the list of subscribers and activated services with filtering
- Details by subscriber
- Add / edit subscriber properties

- Enable / disable services
- Perform group operations

Adding a new subscriber

Click the Add button. At the bottom of the table, a new line will be added and the form will be opened as in the figure below.

The screenshot shows the 'VAS Experts DPI : Test stand .34' interface. The 'SERVICES CONTROL' tab is active. The 'SERVICES CONTROL / SUBSCRIBERS AND SERVICES' form is open. A green arrow points to the 'Add' button (a plus sign) in the top left corner of the table. The form contains the following fields:

- Profile**: A dropdown menu.
- Login**: A text input field.
- IP address**: A text input field.
- Bind type**: A dropdown menu.
- Services**: A table with columns 'Service', 'Enabled', and 'Profile'.

Id	Service	Enabled	Profile
1	Bonus program	<input type="checkbox"/> No	
2	Advertising	<input type="checkbox"/> No	
3	Ad blocking	<input type="checkbox"/> No	
4	Black list	<input type="checkbox"/> No	
5	White list	<input type="checkbox"/> No	
6	Announcement	<input type="checkbox"/> No	
7	Caching	<input type="checkbox"/> No	
8	Passed DDoS protection	<input type="checkbox"/> No	
9	Netflow stats	<input type="checkbox"/> No	

At the bottom of the form, there are 'Close' and 'Save' buttons.

Select the connection type, fill in the Login and IP address fields. Activate the necessary services. Click Save.

Editing a subscriber

You can edit the subscriber either by using the detailization form (on the right) or by using another separate form, if you click on the Edit icon opposite to the subscriber.

The screenshot shows a 'Profile' configuration window. The 'Login' field contains 'user22' and the 'IP-address...' field contains '1.1.1.3'. The 'Connection type' is set to 'Multi: multiple IP - one login'. Below this is a 'Services' table with the following data:

Id	Service	Enabled	Profile
1	Bonus program	<input type="checkbox"/> No	
2	Advertising	<input checked="" type="checkbox"/> Yes	
3	Ad blocking	<input checked="" type="checkbox"/> Yes	
4	Black list	<input checked="" type="checkbox"/> Yes	
5	White list	<input checked="" type="checkbox"/> Yes	
6	Announcement	<input checked="" type="checkbox"/> Yes	
7	Caching	<input type="checkbox"/> No	
8	Passed DDoS protection	<input type="checkbox"/> No	
9	Netflow stats	<input type="checkbox"/> No	

At the bottom of the window are 'Close' and 'Save' buttons. A green arrow points to the 'Services' button in the left sidebar.

You can change the subscriber login and IP address. For the subscriber using the "Without bind" connection type you can change only the IP address. Services can be enabled or disabled.

Note: if the subscriber has a "Multi" connection type, then enabling and disabling of services will be performed for all of the subscriber's IP addresses.

Group-wide services enabling/disabling

It is possible to enable and disable services to a group of subscribers at once. To do this, select several lines (with ctrl or shift) and click the Services button.

A form will be opened, where you can activate and deactivate services for the selected subscribers.

SERVICES CONTROL / SUBSCRIBERS AND SERVICES

Services

id	Service	Enabled	Profile
1	Bonus program	<input type="checkbox"/> No	
2	Advertising	<input type="checkbox"/> No	
3	Ad blocking	<input type="checkbox"/> No	
4	Black list	<input checked="" type="checkbox"/> Yes	
5	White list	<input type="checkbox"/> No	
6	Announcement	<input type="checkbox"/> No	
7	Caching	<input type="checkbox"/> No	
8	Passed DDoS protection	<input type="checkbox"/> No	
9	Netflow stats	<input type="checkbox"/> No	
10	DDoS protection	<input type="checkbox"/> No	
11	CONAT	<input type="checkbox"/> No	
12	notification	<input type="checkbox"/> No	

Multiple rows selected

Close Save