

**Содержание**

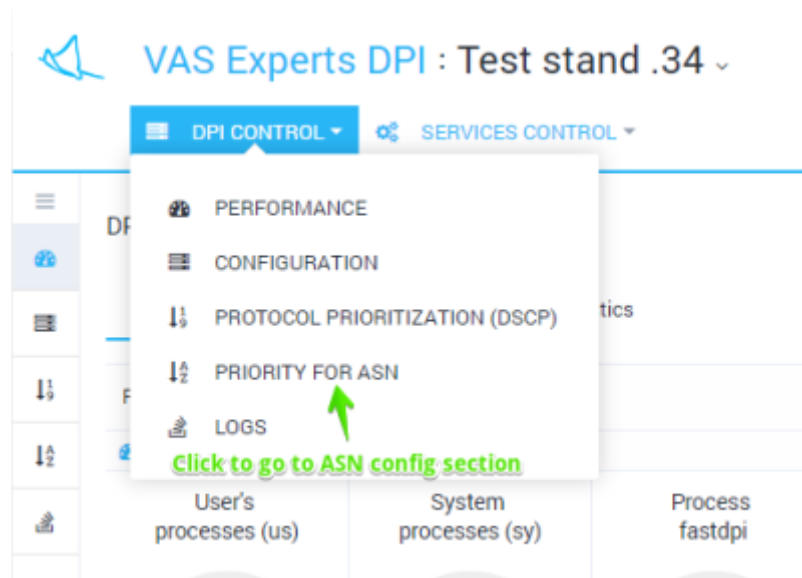
**4 Prioritization by ASN ..... 3**



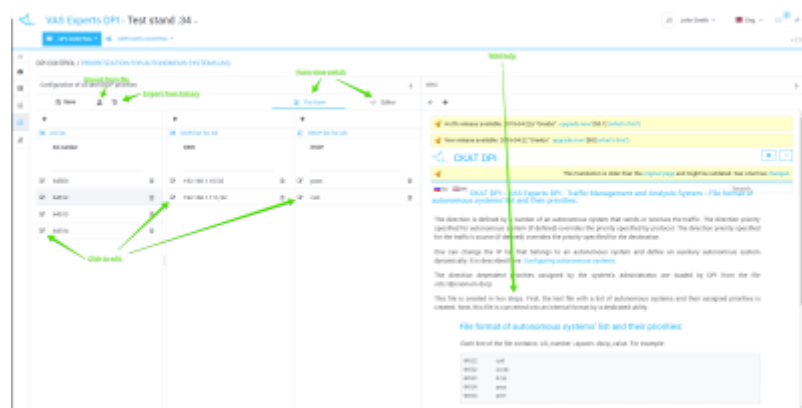
## 4 Prioritization by ASN

## Editing

To go to the section, open the "DPI CONTROL" menu and click "PRIORITY FOR ASN".



The section looks like the figure below.



In this section, you can view and filter the list of AS (autonomous systems) and its corresponding priorities and CIDR, add, delete or edit them.

Editing is done in tabular form. To edit, double-click on the line.

Editing is conditionally divided into 3 stages:

- The AS list is filled in/edited (left column)
- The CIDR list is filled (central column) for each AS
- The DSCP list for AS is filled (right column) for each AS

When populating the dscp values, a drop-down prompt appears.

DSCP name	Binary value	Decimal value	Priority	Polysing class	class_order=1
cs0	000 000	0	0	0	7
cs1	001 000	8	1	1	6
cs2	010 000	16	2	2	5
cs3	011 000	24	3	3	4
cs4	100 000	32	4	4	3
cs5	101 000	40	5	5	2
cs6	110 000	48	6	6	1
cs7	111 000	56	7	7	0

Do not forget to click Save after making changes.

## Direct editing

It is possible to edit the file directly without using tabular forms. To switch to the direct editing mode, click "Editor".

Configuration of AS and DSCP priorities

Save

List of AS and DSCP

List of AS and DSCP

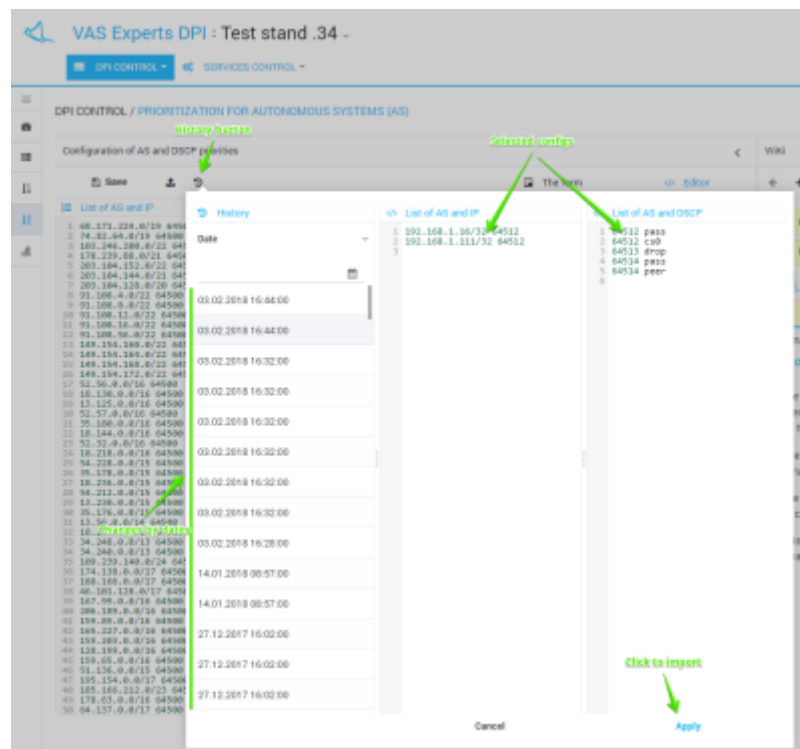
List with format "AS space DSCP"

Click to apply

Apply

## View and import from history

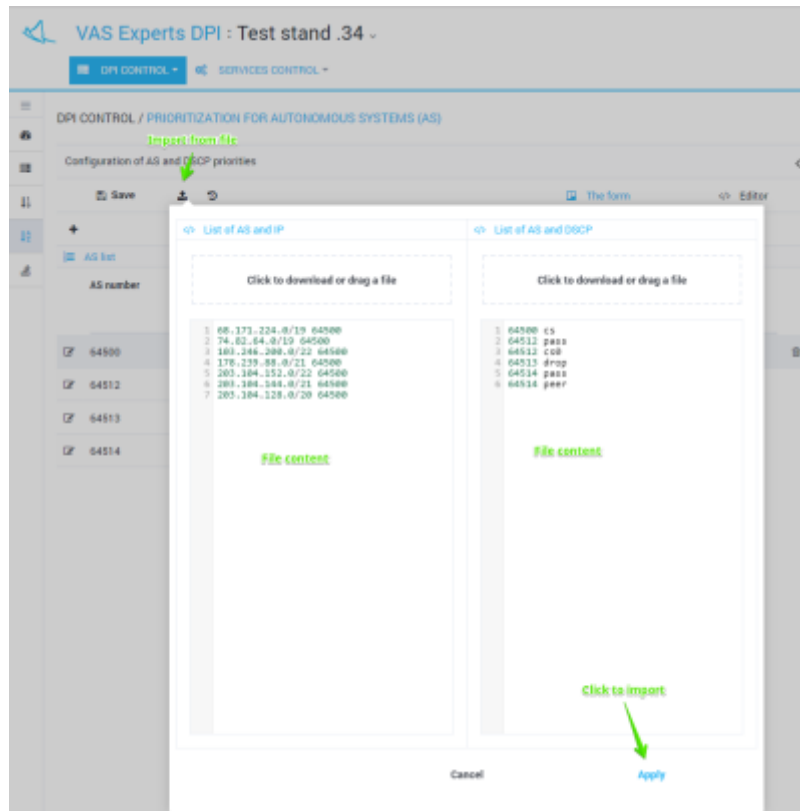
To view the history changes, click the "History" button. The form will be opened as in the figure below.



It is possible to view and filter by date a list of changes. Select and apply a change from the history.

## Import and view from a file

To import from a file, click the "Import" button. The form will be opened as in the figure below.



Drag the file to the import zone. The contents of the file will be displayed below. Click Apply to import the contents of the file.