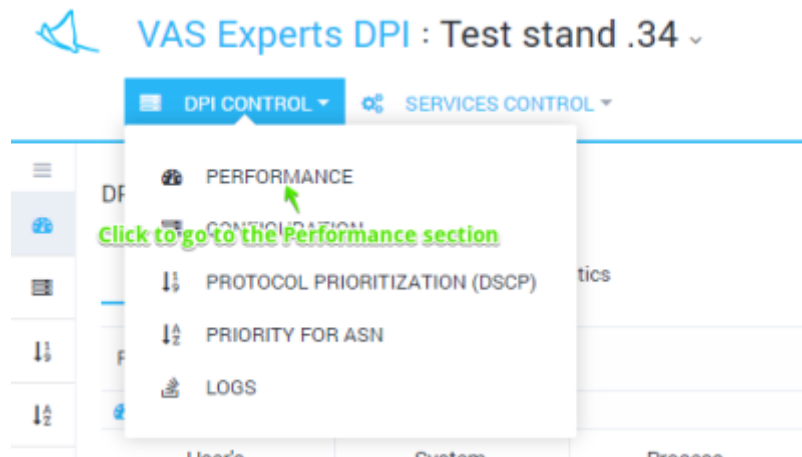


Содержание

Performance 3

Performance

To go to the Performance section, open the "DPI CONTROL" menu and click on the "Performance".



The section contains 2 subsections:

- [Online](#) - the current state in real time is displayed
- [Statistics](#) - the accumulated statistics for the period are displayed

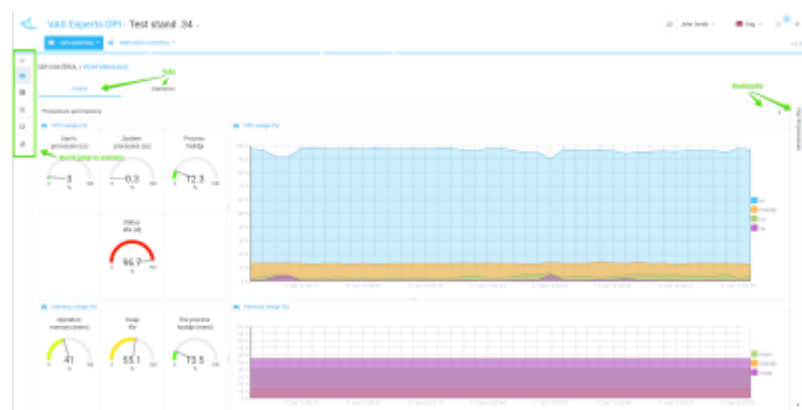
Online

This section shows the current state of DPI performance in real time.

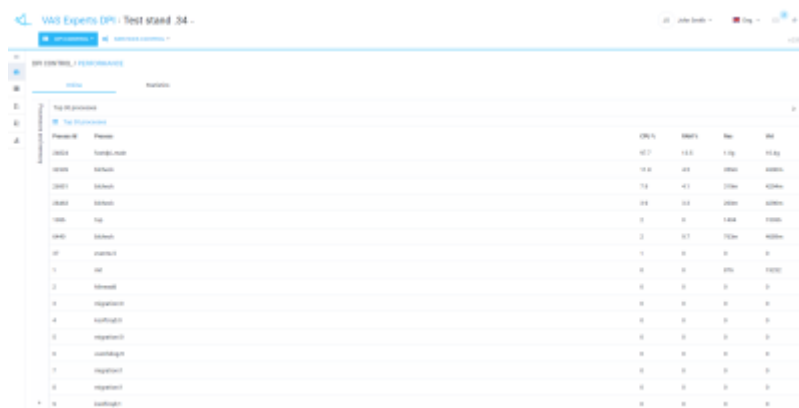
It is possible to switch between 2 tabs:

- [Processors and memory](#) - Processors and memory usage are displayed
- [Top 30 processes](#) - TOP 30 processes list is displayed

Processors and memory



Top 30 processes



The screenshot shows the 'Performance' tab in VAS Experts. The 'Top 30 processes' table lists the following data:

Process ID	Process Name	CPU %	MEM %	Res.	Priv.
1000	System Idle	92.7	0.0	1.0g	0.0g
1001	System	0.0	0.0	0.0	0.0
1002	System	0.0	0.0	0.0	0.0
1003	System	0.0	0.0	0.0	0.0
1004	System	0.0	0.0	0.0	0.0
1005	System	0.0	0.0	0.0	0.0
1006	System	0.0	0.0	0.0	0.0
1007	System	0.0	0.0	0.0	0.0
1008	System	0.0	0.0	0.0	0.0
1009	System	0.0	0.0	0.0	0.0
1010	System	0.0	0.0	0.0	0.0
1011	System	0.0	0.0	0.0	0.0
1012	System	0.0	0.0	0.0	0.0
1013	System	0.0	0.0	0.0	0.0
1014	System	0.0	0.0	0.0	0.0
1015	System	0.0	0.0	0.0	0.0
1016	System	0.0	0.0	0.0	0.0
1017	System	0.0	0.0	0.0	0.0
1018	System	0.0	0.0	0.0	0.0
1019	System	0.0	0.0	0.0	0.0
1020	System	0.0	0.0	0.0	0.0
1021	System	0.0	0.0	0.0	0.0
1022	System	0.0	0.0	0.0	0.0
1023	System	0.0	0.0	0.0	0.0
1024	System	0.0	0.0	0.0	0.0
1025	System	0.0	0.0	0.0	0.0
1026	System	0.0	0.0	0.0	0.0
1027	System	0.0	0.0	0.0	0.0
1028	System	0.0	0.0	0.0	0.0
1029	System	0.0	0.0	0.0	0.0
1030	System	0.0	0.0	0.0	0.0

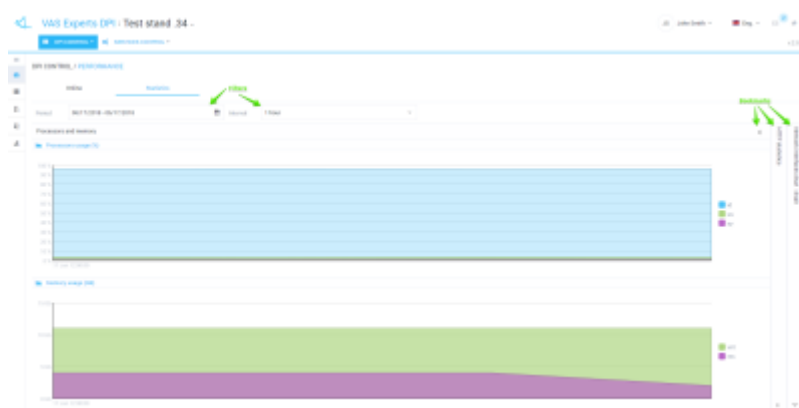
Statistics

This section shows the accumulated statistics for the period. You can change the period and the interval for displaying the data.

It is possible to switch between the following tabs:

- [Processors and memory \(statistics\)](#) - Processors load and memory usage statistics are displayed
- [HTTP statistics](#) - processed and blocked HTTP requests statistics are displayed
- [Network interfaces dna0-dnaX](#) - traffic statistics per dna interface

Processors and memory (statistics)



HTTP statistics

