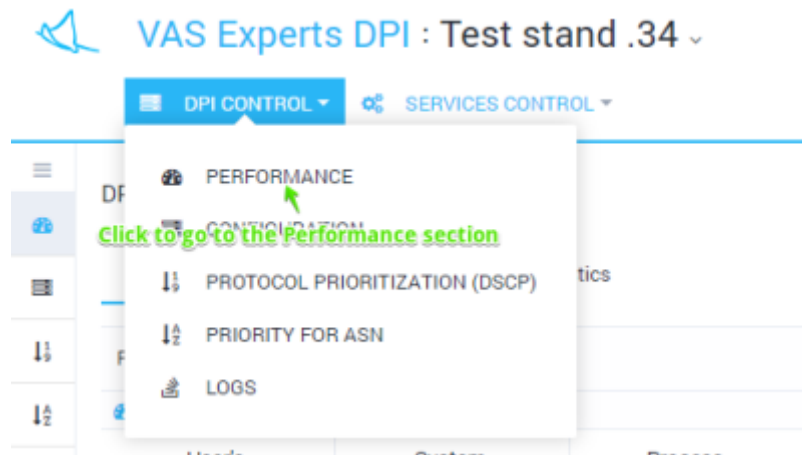


Table of Contents

1 Performance 3

1 Performance

To go to the Performance section, open the "DPI CONTROL" menu and click on the "Performance".



The section contains 2 subsections:

- [Online](#) - the current state in real time is displayed
- [Statistics](#) - the accumulated statistics for the period are displayed

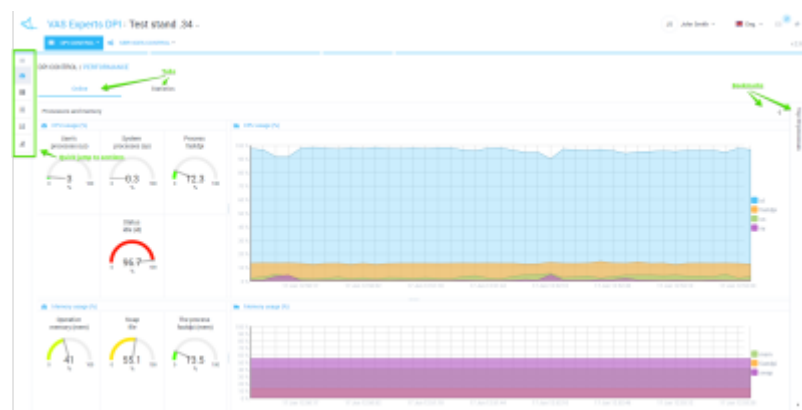
Online

This section shows the current state of DPI performance in real time.

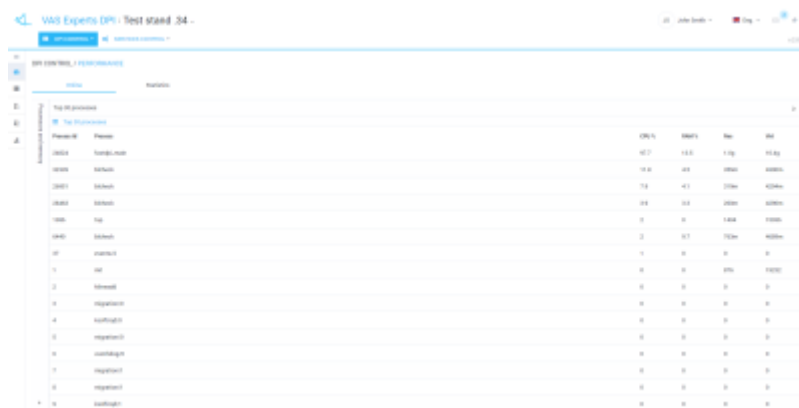
It is possible to switch between 2 tabs:

- [Processors and memory](#) - Processors and memory usage are displayed
- [Top 30 processes](#) - TOP 30 processes list is displayed

Processors and memory



Top 30 processes



The screenshot shows the 'Performance' tab in VAS Experts. The 'Top 30 processes' table lists the following data:

Process ID	Process Name	CPU %	MEM %	Res.	Max
10000	System Idle	92.0	0.0	1.0g	1.0g
10001	System	0.0	0.0	1.0g	1.0g
10002	System	0.0	0.0	1.0g	1.0g
10003	System	0.0	0.0	1.0g	1.0g
10004	System	0.0	0.0	1.0g	1.0g
10005	System	0.0	0.0	1.0g	1.0g
10006	System	0.0	0.0	1.0g	1.0g
10007	System	0.0	0.0	1.0g	1.0g
10008	System	0.0	0.0	1.0g	1.0g
10009	System	0.0	0.0	1.0g	1.0g
10010	System	0.0	0.0	1.0g	1.0g
10011	System	0.0	0.0	1.0g	1.0g
10012	System	0.0	0.0	1.0g	1.0g
10013	System	0.0	0.0	1.0g	1.0g
10014	System	0.0	0.0	1.0g	1.0g
10015	System	0.0	0.0	1.0g	1.0g
10016	System	0.0	0.0	1.0g	1.0g
10017	System	0.0	0.0	1.0g	1.0g
10018	System	0.0	0.0	1.0g	1.0g
10019	System	0.0	0.0	1.0g	1.0g
10020	System	0.0	0.0	1.0g	1.0g
10021	System	0.0	0.0	1.0g	1.0g
10022	System	0.0	0.0	1.0g	1.0g
10023	System	0.0	0.0	1.0g	1.0g
10024	System	0.0	0.0	1.0g	1.0g
10025	System	0.0	0.0	1.0g	1.0g
10026	System	0.0	0.0	1.0g	1.0g
10027	System	0.0	0.0	1.0g	1.0g
10028	System	0.0	0.0	1.0g	1.0g
10029	System	0.0	0.0	1.0g	1.0g
10030	System	0.0	0.0	1.0g	1.0g

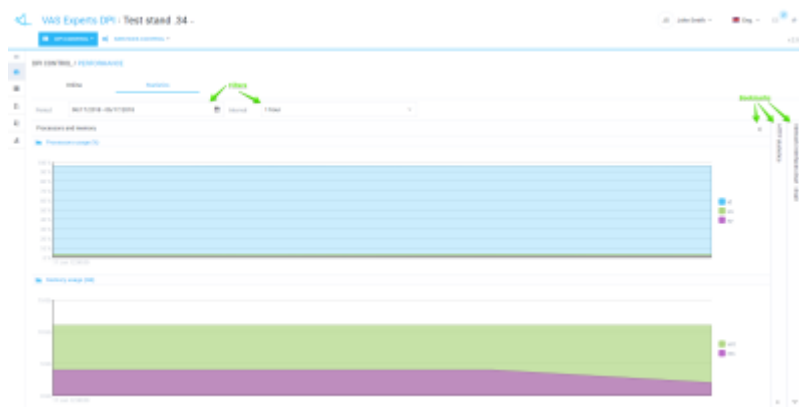
Statistics

This section shows the accumulated statistics for the period. You can change the period and the interval for displaying the data.

It is possible to switch between the following tabs:

- [Processors and memory \(statistics\)](#) - Processors load and memory usage statistics are displayed
- [HTTP statistics](#) - processed and blocked HTTP requests statistics are displayed
- [Network interfaces dna0-dnaX](#) - traffic statistics per dna interface

Processors and memory (statistics)



HTTP statistics

