

Содержание

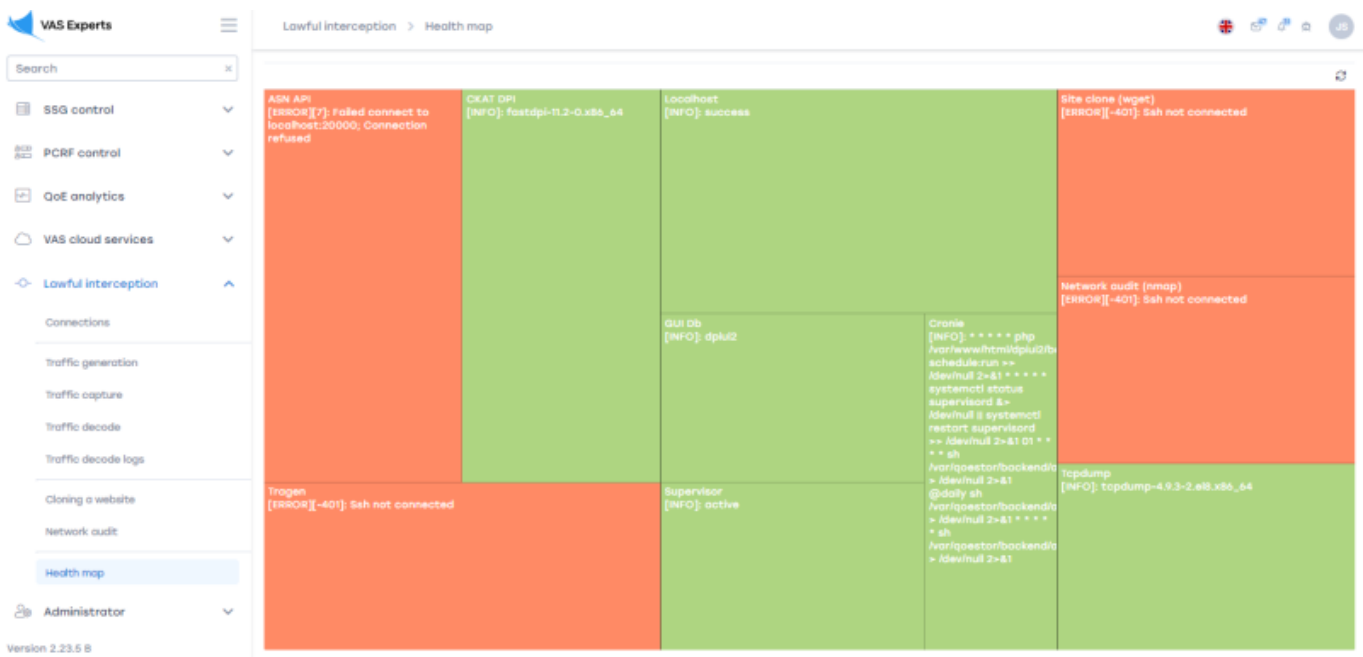
2 Health map ..... 3

*Description* ..... 3



# 2 Health map

To go to the Health map section, open the LAWFUL INTERCEPTION menu and HEALTH MAP.



This section is designed to check the health of all services.

## Description



**ASN API.** Contains information about IP-addresses.  
**CKAT DPI.** Information about traffic monitoring and analysis.  
**Tragen.**

ASN API [ERROR][7]: failed connect to localhost:30000; Connection refused	CKAT DPI [INFO]: fastdpi-11.2-0.x86_64	Localhost [INFO]: success	Site clone (wget) [ERROR][401]: Ssh not connected
		GUI DB [INFO]: dpui2	Network audit (nmap) [ERROR][401]: Ssh not connected
Tragen [ERROR][401]: Ssh not connected		Supervisor [INFO]: active	Tcpdump [INFO]: tcpdump-4.9.3-2.el8.x86_64
		Cronie [INFO]: * * * * * php /var/www/html/dpui2/schedule-run == /dev/null 2>&1 * * * * * systemctl status supervisor &= /dev/null & systemctl restart supervisor == /dev/null 2>&1 01 * * * * sh /var/qosstor/backends == /dev/null 2>&1 @daily sh /var/qosstor/backends == /dev/null 2>&1 * * * * sh /var/qosstor/backends == /dev/null 2>&1	

**Localhost.** Information about the status of this host.  
**GUI Db.** Information about the database interface.  
**Cronie.** Information about tasks performed by the task scheduler.  
**Supervisor.** Contains information about the system designed to manage services.

ASN API [ERROR][7]: failed connect to localhost:30000; Connection refused	CKAT DPI [INFO]: fastdpi-11.2-0.x86_64	Localhost [INFO]: success	Site clone (wget) [ERROR][401]: Ssh not connected
		GUI DB [INFO]: dpui2	Network audit (nmap) [ERROR][401]: Ssh not connected
Tragen [ERROR][401]: Ssh not connected		Supervisor [INFO]: active	Tcpdump [INFO]: tcpdump-4.9.3-2.el8.x86_64
		Cronie [INFO]: * * * * * php /var/www/html/dpui2/schedule-run == /dev/null 2>&1 * * * * * systemctl status supervisor &= /dev/null & systemctl restart supervisor == /dev/null 2>&1 01 * * * * sh /var/qosstor/backends == /dev/null 2>&1 @daily sh /var/qosstor/backends == /dev/null 2>&1 * * * * sh /var/qosstor/backends == /dev/null 2>&1	

**Site clone (wget).** Information about the status of the "Website Cloning" section for this host.  
**Network audit (nmap).** Information about the status of the "Network Audit" section for this host.  
**Tcpdump.** General information about the status of the sections "Traffic generation", "Traffic capture", "Traffic analysis", "Traffic analysis logs" for this host.