

Содержание

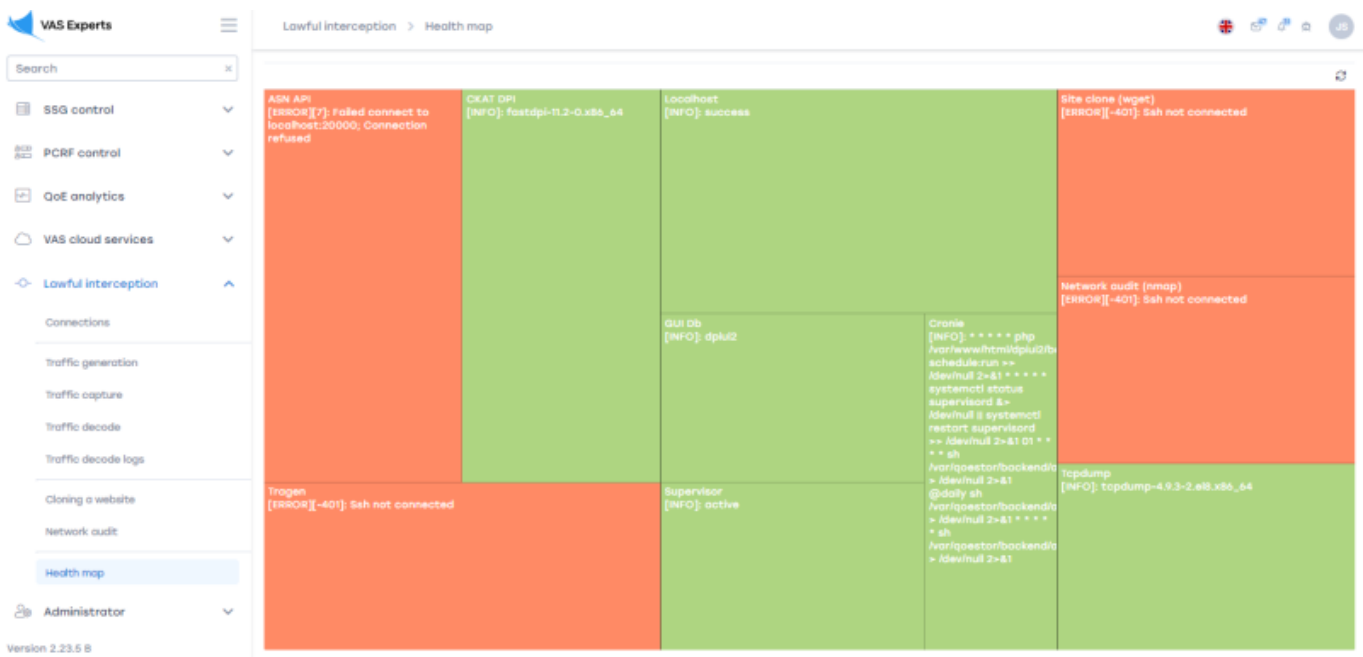
2 Health map ..... 3

*Description* ..... 3



# 2 Health map

To go to the Health map section, open the LAWFUL INTERCEPTION menu and HEALTH MAP.



This section is designed to check the health of all services.

## Description



**ASN API.** Contains information about IP-addresses. **CKAT DPI.** Information about traffic monitoring and analysis. **Tragen.**

ASN API [ERROR][7]: Failed connect to localhost:20000; Connection refused	CKAT DPI [INFO]: fastdpi-11.2-0.x86_64	localhost [INFO]: success	Site clone (wget) [ERROR][(-401): Ssh not connected
			Network audit (nmap) [ERROR][(-401): Ssh not connected
		GUI Db [INFO]: dpui2	
		Cronie [INFO]: * * * * * php /var/www/html/dpui2/b schedule.run >> /dev/null 2>&1 * * * * systemctl status supervisord &> /dev/null & systemctl restart supervisord >> /dev/null 2>&1 01 * * * * sh /var/lib/ghost/backends > /dev/null 2>&1 @daily sh /var/lib/ghost/backends > /dev/null 2>&1 * * * * * sh /var/lib/ghost/backends > /dev/null 2>&1	
Tragen [ERROR][(-401): Ssh not connected		Supervisor [INFO]: active	tcpdump [INFO]: tcpdump-4.9.3-2.el8.x86_64

**Localhost.** Information about the status of this host. **GUI Db.** Information about the database interface. **Cronie.** Information about tasks performed by the task scheduler. **Supervisor.** Contains information about the system designed to manage services.

ASN API [ERROR][7]: Failed connect to localhost:20000; Connection refused	CKAT DPI [INFO]: fastdpi-11.2-0.x86_64	localhost [INFO]: success	Site clone (wget) [ERROR][(-401): Ssh not connected
			Network audit (nmap) [ERROR][(-401): Ssh not connected
		GUI Db [INFO]: dpui2	
		Cronie [INFO]: * * * * * php /var/www/html/dpui2/b schedule.run >> /dev/null 2>&1 * * * * systemctl status supervisord &> /dev/null & systemctl restart supervisord >> /dev/null 2>&1 01 * * * * sh /var/lib/ghost/backends > /dev/null 2>&1 @daily sh /var/lib/ghost/backends > /dev/null 2>&1 * * * * * sh /var/lib/ghost/backends > /dev/null 2>&1	
Tragen [ERROR][(-401): Ssh not connected		Supervisor [INFO]: active	tcpdump [INFO]: tcpdump-4.9.3-2.el8.x86_64

**Site clone (wget).** Information about the status of the "Website Cloning" section for this host. **Network audit (nmap).** Information about the status of the "Network Audit" section for this host. **Tcpdump.** General information about the status of the sections "Traffic generation", "Traffic capture",

"Traffic analysis", "Traffic analysis logs" for this host.