

Содержание

1 Managing the list of devices	3
---	----------

1 Managing the list of devices

To switch to the section "Managing the list of devices" open the "Device_name" menu and click "Managing the list of devices".



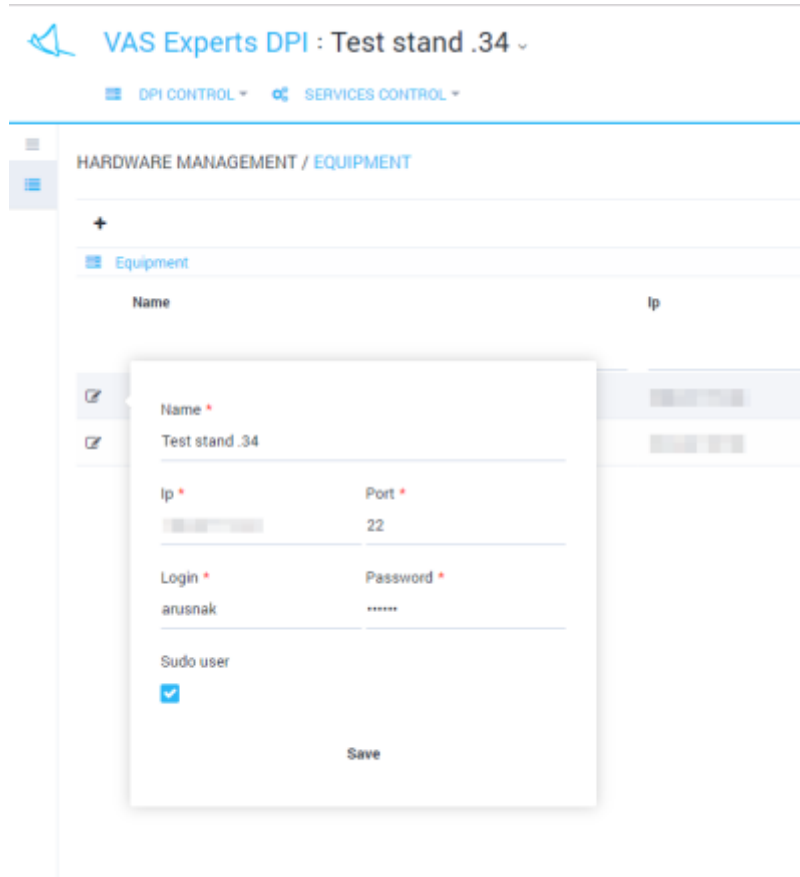
The section looks like the figure below.



This section implements the following features:

- View a list of devices along with filtering feature
- Add new device
- Edit parameters of existing device
- Delete device

Edit form looks like the figure below.



The edit form allows to specify following parameters:

- Device name
- Device IP address used to establish ssh connection
- Port number used to establish ssh connection
- User name
- Password
- Flag, specifying whether the user added to the /etc/sudoers file (allowed to run programs as super user do) or not

Note: For a proper work use a user with sudo rights (defined in the /etc/sudoers file). See section [Equipment connection -> Sudo user](#)