

# Содержание

FastDPI server .....	3
----------------------	---



# FastDPI server

Section content:

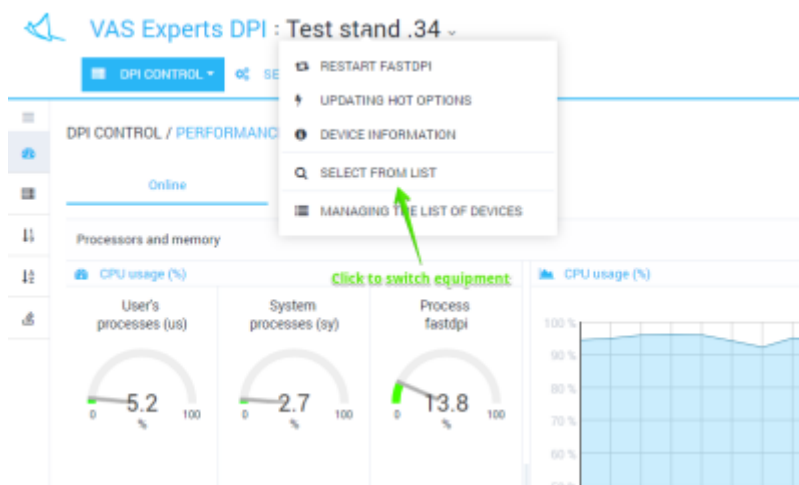
- [Switching between DPIs](#)
- [DPI information](#)
- [Updating hot options](#)
- [Restart FastDPI](#)

## Switching between DPIs

You can control only one selected device.



To switch to the section "Managing the list of devices" open the "Device\_name" menu and press "Select from list".



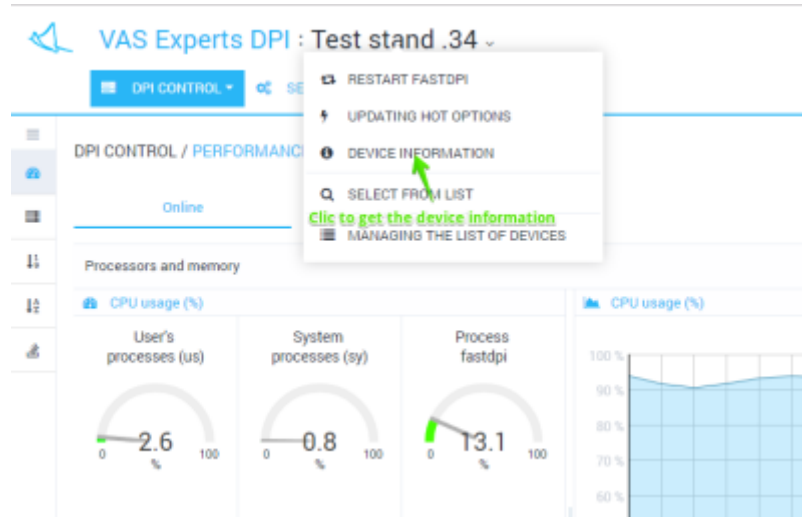
The list (with filtration options) of available devices will be opened.



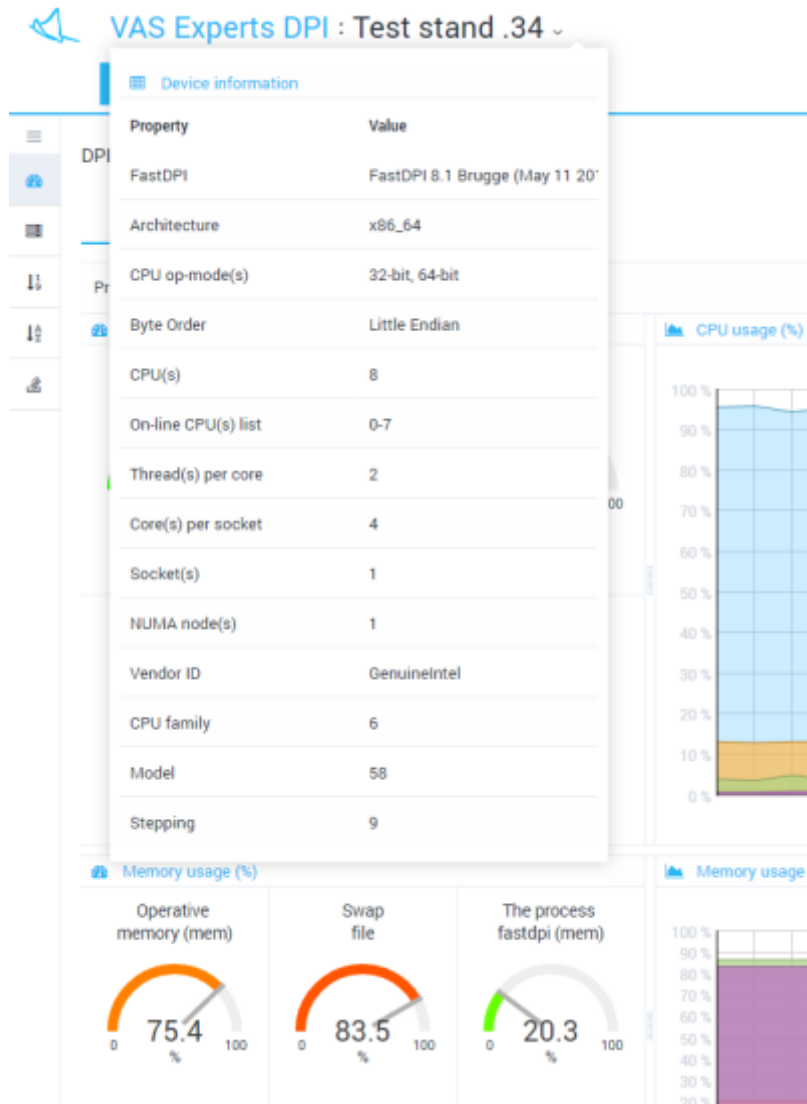
Clicking on a list item causes switching to the device

## DPI information

For device information open the "Device\_name" menu and press the "Device information".



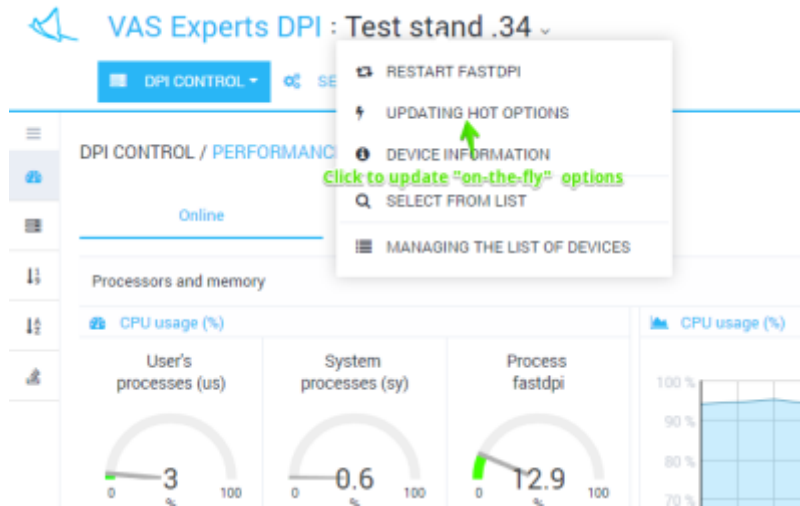
Subwindow "Device information" containing device main characteristics will be opened



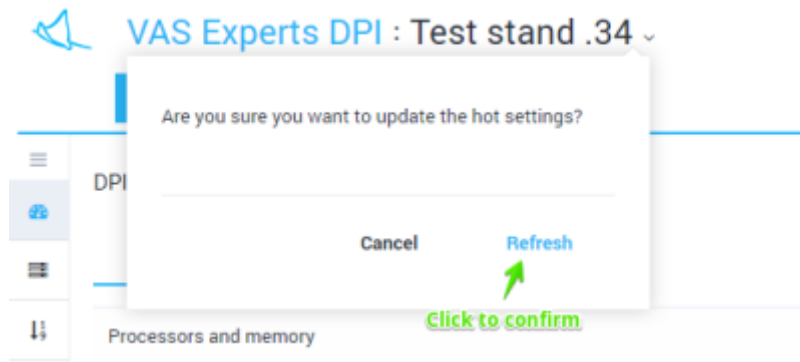
## Updating hot options

When you change some options (the so-called "on-the-fly" or "hot" options) in the hardware configuration, it is not necessary to restart the fastdpi service. You can use "Updating hot options".

To update "hot" ("on-the-fly") options open the "Device\_name" menu and press "Updating hot options".



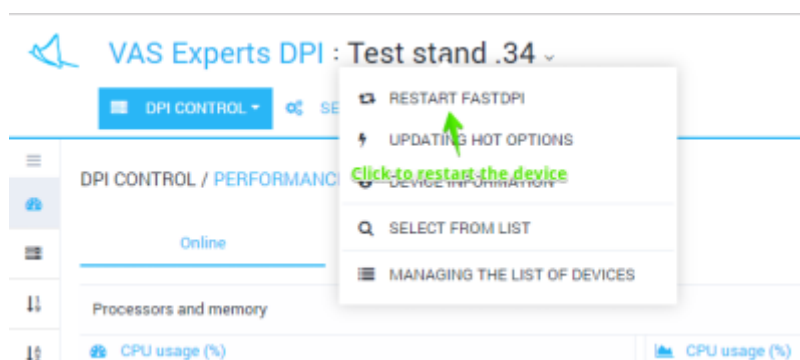
You will be prompted to confirm the operation. Click Refresh.



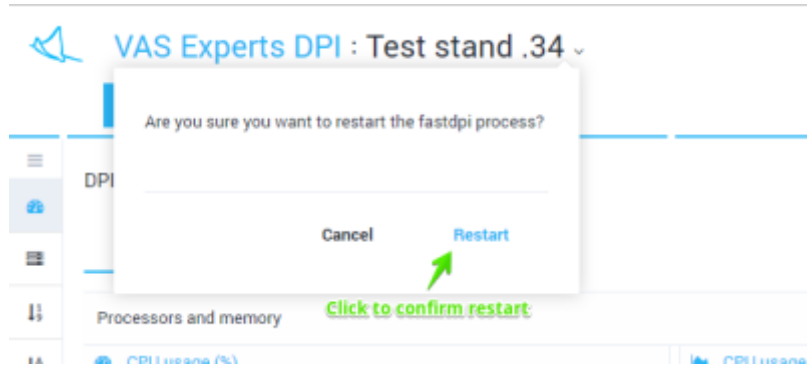
An operation will be performed. The result will be displayed.

## Restart FastDPI

If you change standard (not "on-the-fly") options you need to restart the fastdpi service.



To restart the service, open the "Device\_name" menu and click "Restart fastdpi".



A restart will be performed. The result will be displayed.